

# KNOW MORE. SAVE MORE.

## Building Energy Audits for Local Governments

Powered by the Local Government Energy Modernization (L-GEM) Program  
Maryland Energy Administration | FY26 Opportunity

### WHAT IS A BUILDING ENERGY AUDIT?

A Building Energy Audit evaluates how facilities use energy and identifies opportunities to reduce waste, costs, and emissions. ASHRAE Level II audits are the industry standard, providing detailed analyses of utility data and building systems to recommend efficiency upgrades, estimate savings, and prioritize improvements. These audits deliver actionable results and serve as a roadmap for future projects and funding applications.

Key features of ASHRAE Level II (or higher) audits:

- Analyze energy usage and building systems
- Identify low- and no-cost operational improvements
- Recommend upgrades and savings estimates
- Prioritize measures by cost and payback

### RESOURCES & SUPPORT

- [L-GEM Grant Program](#)
- [DGS Decarbonization Planning Contracts](#)
- [Maryland Clean Energy Center Technical Assistance](#)
- [EPA ENERGY STAR Portfolio Manager](#)

### NEED HELP?

Contact UMD EFC at  
[efc\\_climateaction@umd.edu](mailto:efc_climateaction@umd.edu)

Or visit [go.umd.edu/LGEM](https://go.umd.edu/LGEM) for full application materials and timeline.



### MAJOR BENEFITS

Building energy audits can lead to:

- LOWERED energy costs
- REDUCED greenhouse gas emissions
- INCREASED energy efficiency
- IMPROVED facility performance and reliability
- ADVANCED planning and funding readiness

### GET STARTED

01

#### Select buildings and gather data.

Focus on facilities with high energy use, aging systems, or deferred maintenance. Compile building information and at least 12 months of electricity, gas, and other utility bills.

02

#### Document current conditions.

Coordinate with facilities staff to record system details, equipment age, and known performance issues.

03

#### Identify funding options.

Visit [Clean Buildings Hub](#) to explore energy funding and financing opportunities

04

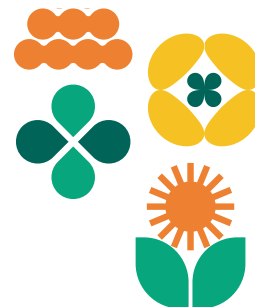
#### Engage a qualified auditor.

Choose an experienced firm that conducts ASHRAE Level II audits for public buildings; ask for references and sample reports to ensure quality.

05

#### Get technical help.

Reach out to the [Local Government Climate Action Support Program](#) for assistance.



ENVIRONMENTAL  
FINANCE CENTER



Maryland  
Energy Administration